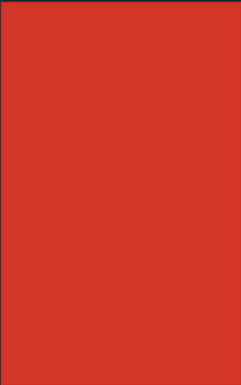




**interfaith
dental clinic**
A smile changes everything.

Metrics for mouths

- What your dental program needs to measure for success now, and in the future



UT (usual tracking)

- Encounters
- Unduplicated patients
- Number of procedures
- Cost/encounter
- Number of new patients
- No show rates
- Poverty level
- Age, gender, race, ethnicity

Smart Codes (outcomes)

- Dental disease levels
- Poverty levels
- Other medical challenges
- Work place ready (social six)
- Disease free
- ED utilization rate for tooth problem
- Predict NOED for a year? longer?
- Cancer screened
- Positive home behaviors
- Change in caries risk
- Gum disease maintainable
- Taking Rx as prescribed
- Established a dental home
- Treatment plan completion
- 😊 or ☹️ 1 to 10 scale
- Can eat what they want (function)
- Language barrier

Big Picture (collective impact)

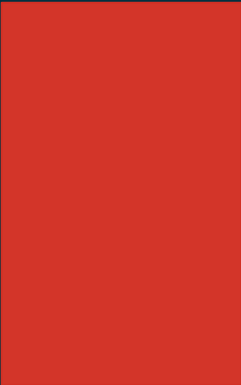
- No wrong door
- No one goes to bed hurting
- ED is utilized appropriately
- Decrease in devastation of serious tooth infections
- Oral cancer rates drop (HPV vaccine)
- Morbidity and mortality of oral cancer, stroke, heart disease, diabetes, preterm labor drops because of early detection and decrease in risk factors
- Early childhood caries decreases
- Earning and learning supported by sound oral health



**interfaith
dental clinic**
A smile changes everything.

SMILE ON

- Tennessee's Oral Health Network serving low-income Seniors 60+





IN THE CHANCERY COURT FOR THE STATE OF TENNESSEE
TWENTIETH JUDICIAL DISTRICT, DAVIDSON COUNTY, PART III

STATE OF TENNESSEE, ex rel.)
ROBERT E COOPER, JR., ATTORNEY)
GENERAL and REPORTER,)

Plaintiff,)

VS.)

SENIORTRUST OF FLORIDA, INC.,)

Defendant.)

STATE OF TENNESSEE, ex rel.)
ROBERT E. COOPER, JR.,)
ATTORNEY GENERAL and)
REPORTER,)

Plaintiff,)

VS.)

ELDERTRUST OF FLORIDA, INC.,)

Defendant.)

NF
NO. 11-1548-III

FILED
2016 MAR 15 PM 2:37
CLERK OF COURT
DAVIDSON COUNTY CHANCERY CT.
D.C. & M.

MEMORANDUM ON START-UP OF DISTRIBUTION PLAN



Older Adults' Oral Health in a **STATE OF DECAY**

By 2030,
there will be

72+
MILLION

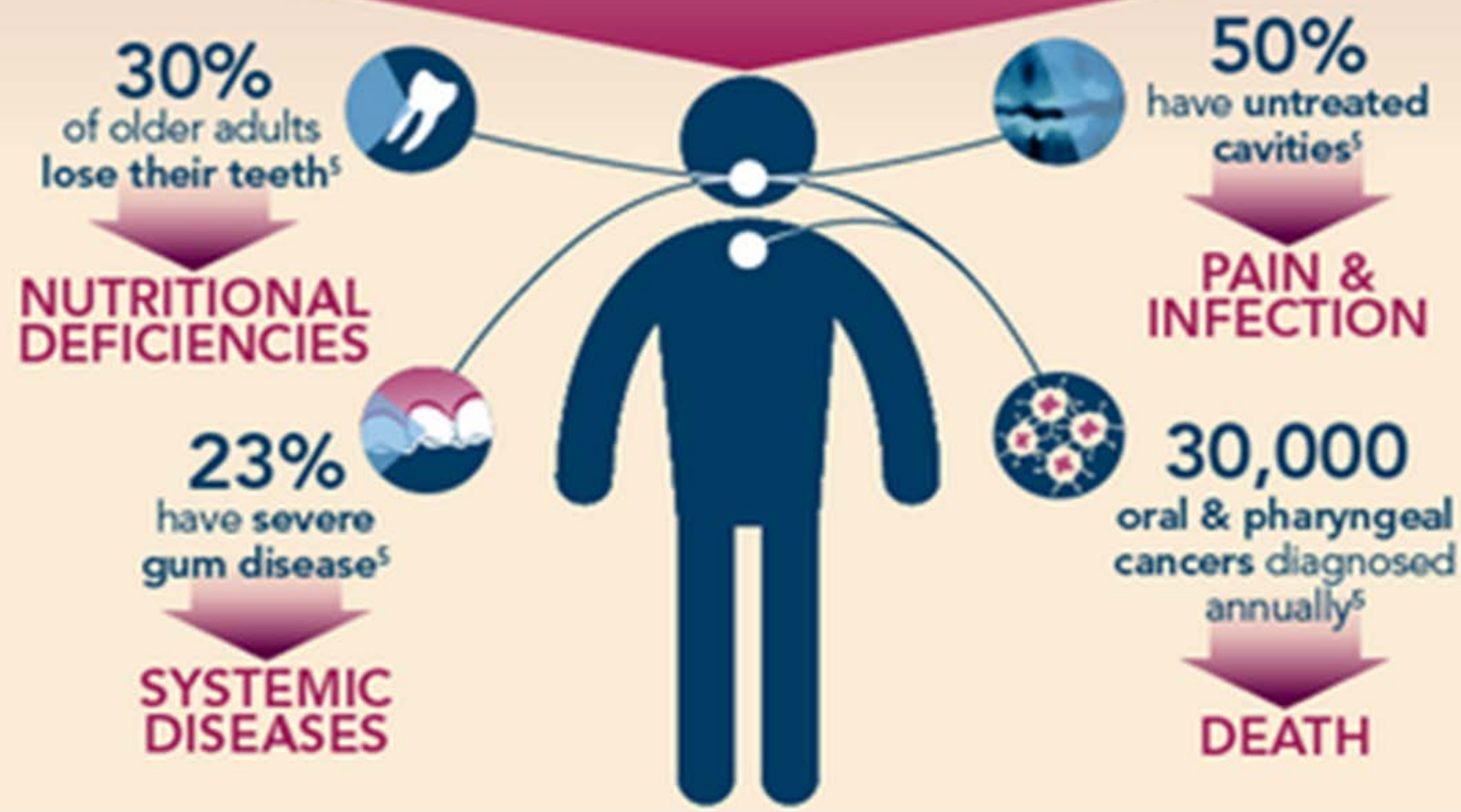
older adults
in the U.S.¹



MOST won't have access to dental care,
impacting overall health.

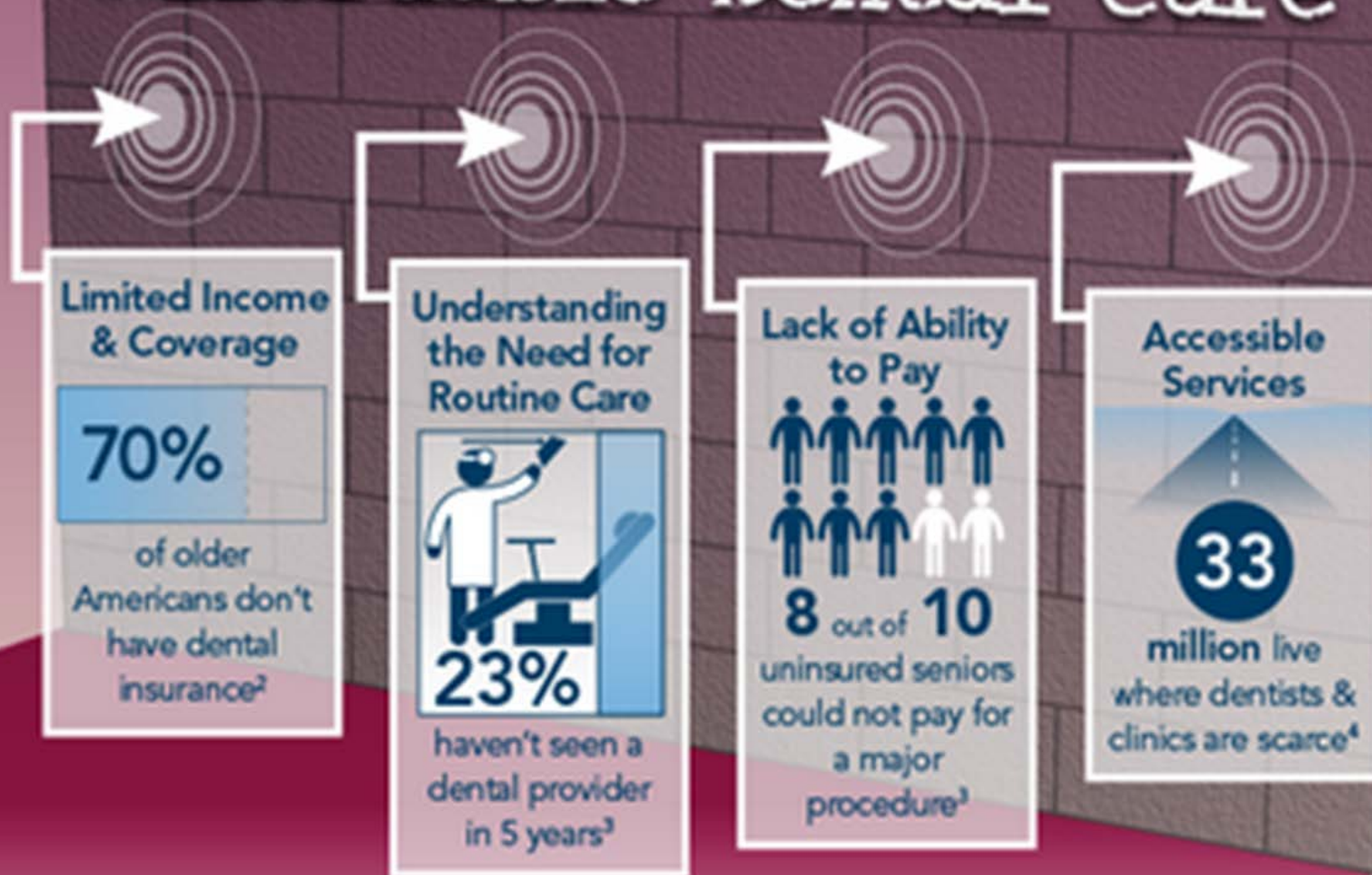


Poor Oral Health and Lack of Care Can Result in Overall Health Issues





Barriers to Accessing Affordable Dental Care





“I love my teeth—to smile and eat now is a joy!”

-Mary, Interfaith Dental Clinic
Patient Graduate



Vision

SMILE ON is a significant piece of the senior dental access puzzle for those mobile and 60+

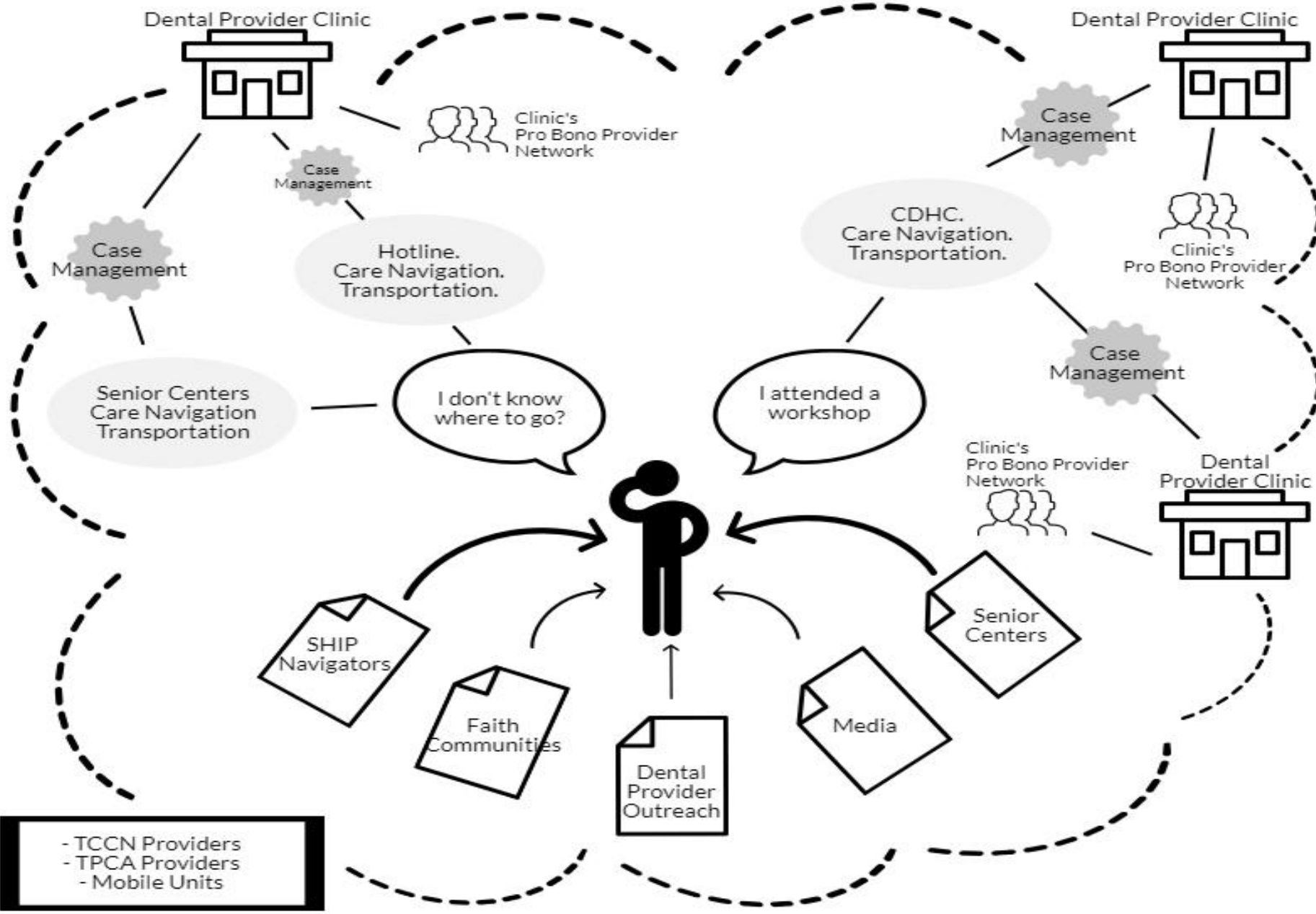
- prevent future morbidity
- encourage further programming ex. Nursing homes
- shine a light on problem, Aging Matters NPT series
- be sustainable



Summary

- Goals:
- X seniors navigated into dental homes
- X seniors obtain an increase in knowledge and change in behavior that is validated
- X seniors experience either improved social confidence (decrease in isolation), an increase in nutritional intake, a decrease in medical disease and future disease risk, a decrease in pain and suffering (all measured clinically and by interview)

- Activities:
- Create structure, competency and capacity in safety net and pro bono dental provider clinics statewide in serving low income 60+ uninsured
- Create an outreach system that will educate, triage and navigate above seniors into provider clinics
- Provide dental care financial and transportation assistance to for seniors to attend provider clinics
- Collect data, gain feedback to perfect and present results
-



Model

- Lead Agency Interfaith Dental - design, coordinate oversight, fiduciary, data and reporting, Middle TN hub
- East and West hubs Provider Partners – house CDHC, training and verification of clinics, host regional meetings
- General Provider Partners – care provision in clinics
- Senior Center Partners – arrange workshops, follow up
- Support Partners – TCCN, TPCA, TDA, FACS, COA
- Transportation Partners





Client and Provider education

- Wisdom Tooth Project
- Webinars, resources





Working together





Looking ahead....



QUESTIONS?